

CTAH -Combined Temperature Altitude Humidity Chamber 1m³ (35ft³)

Climatic chamber 1m³ (35ft³)
 Hot Cold Vacuum Humidity
 -65°C / +200°C
 10 mbar (approx. altitude 85 kft)

Industries

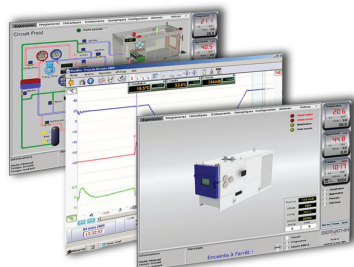
Electronics, defense and aeronautics

Application

Temperature, humidity and vacuum combined tests on electronics components powered with a voltage of less than 6000 volts

Description of the equipment

- The test space with its conditioning unit at the back
- The machinery on the rear side with its electrical cabinet
- The control board in front of the electrical cabinet. Supervision and control using SPIRALE Vs software and command by touch screen



Technical Data

Temperature

Range : -65°C to +200°C

Average cooling rate : 10°C/min from +175°C to -37°C (empty, down to 150 mbar [approx. altitude 44.3 kft])

Average heating rate : 10°C/min from -37°C to +175°C (empty, down to 150 mbar [approx. altitude 44.3 kft])

Temperature stability $\leq \pm 0,5^\circ\text{C}$

Temperature homogeneity : $\pm 2^\circ\text{C}$ at 10 cm of the walls

DUT heat dissipation : 2 kW at -30°C

Humidity

Range of temperature : +10°C to +95°C

Range of humidity: 10 to 98% RH, without dissipation, empty (pressure down to 150 mbar [approx. altitude 44.3 kft], during 4h max)

Homogeneity : $\pm 3 \%$, at 10 cm of the walls

Vacuum

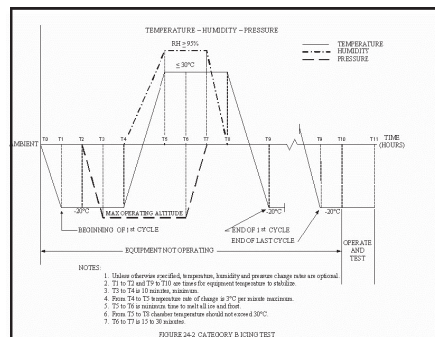
From AP to 10 mbar, regulated down to 50 mbar (approx. altitude 63.5 kft)

In the range from 100°C down to -65°C

Regulating accuracy : ± 1 mbar

Dimensions (mm)

	Test Space Dimensions	External Dimensions
Width	1000mm (39.4")	1600mm (63.0")
Depth	1000mm (39.4")	4500mm (177.2")
Height	1000mm (39.4")	2500mm (98.4")



Temperature / Humidity / Pressure combined tests (Icing test) according to standards DO 160E and MIL - STD - 810D

Weiss Technik North America, Inc.

3881 N. Greenbrooke Dr. SE
 Grand Rapids, MI 49512 USA
 (616) 554-5020 • Fax: (616) 554-5021

www.weiss-na.com

24/7 Service Support Helpline: 1-800-361-6731

Global Partner for Environmental Test Chambers