



RetroFit – to Keep Things Running Smoothly.

Getting the most out of your
Environmental Test Chamber

Update your system the simple way.

RetroFit. Individual and sustained all-round service for modernization and expansion.

Modern testing processes are constantly faced with new challenges regarding increasing digitization, efficiency and legal requirements. When modernization is considered, RetroFit provides a sensible alternative for many long existing systems instead of completely replacing them with new installations. Substituting obsolete components and integrating new, up-to-date technological solutions also increase the productivity and improve the product quality.

Increase service life, lower investment

RetroFit not only extends the service life of your system, it also leads to significantly lower costs compared with new acquisitions and complete replacement.

Unique facility, unique service

RetroFit is our individual service program for all systems already in service. Particular attention is paid to preventive measures to ensure that downtimes and the unpredictable costs associated with downtimes do not occur in the first place. The spectrum covered by our RetroFit services is vast: it ranges from small touch panels and cooling technology in cooling circuits to integrated complete solutions for energy optimization.



Know-how you can rely on

Specially trained RetroFit service teams will provide you with an overview of the current condition of your system, which provides the basis for our realistic assessment of the necessary measures and optional recommendations.

RetroFit Benefits



Improve Quality



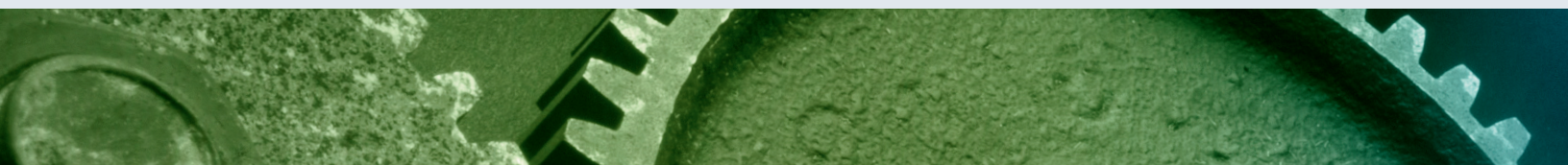
Increase Productivity



Energy Savings



Cost of Ownership Savings



RetroFit - Ideal for Small and Large Solutions

Instrumentation

Advanced technologies in controller software and hardware allow for upgraded that gives added performance

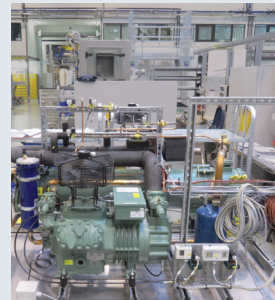
- SImpac Controller
- SImpati TimeLabs
- Component Control
- SImpati Software
- WebSeason Controller
- Product Protection



Mechanical Systems

With your chamber mechanical systems, improvements can be made to get the best out of your equipment and added efficiencies

- Compressors
- Fans
- Values
- Adding Humidity System
- Condensers
- LN2 Boost
- Heat Exchangers
- Defrost System
- Next Generation Refrigeration System (Low GWP)



Electrical Systems

Upgrades to your chamber electrical system can add safety, energy savings and speed to your chamber system

- Voltage Modifications
- Emergency Power Off
- Relays
- VSD (Variable Speed Drives)



Cabinets

Your chamber requirements can change, adding options and upgrades can be an affordable option

- Add/Replace Windows
- Glove Ports
- Door Latches
- Door Gasket Replacement
- Lighting
- Quiet Package
- Ports
- Water Demineralizer
- Update Paint Color or Trim



Turnkey Solutions

Weiss Technik offers turnkey solutions. Let us help plan your next chamber project.



Worldwide Service

24/7 Service Support Helpline: 1-800-361-6731

Weiss Technik products are backed by our 24/7 global factory trained service department. With over 400 service technicians located throughout the globe, we can offer our customers a wide variety of services, including the following:

- > 24/7 Service Helpline
- > Emergency Service
- > Instrumentation Upgrades
- > Equipment Relocation
- > Equipment Modifications
- > Equipment Start-up
- > Instrument Calibration
- > Preventative Maintenance
- > Refrigerant Modification
- > Replacement and Spare Parts
- > Training and Technical Support



Quality

Weiss Technik helps make the task of compliance with the QS9000 3rd Edition Calibration Mandate much simpler. There is no need for you to take the time to actively seek an accredited laboratory.

Weiss Technik, certified ISO9001 in 1997, can provide the latest required ISO/IEC 17025 (A2LA accredited) calibration services at your facility. These services meet 17025 requirements and ensure that your company is in compliance with the most recent changes in the QS9000 3rd Edition mandate.

Please contact us for a copy of our Certificate of Accreditation and a copy of our Calibration Scope of Accreditation.

Weiss Technik North America, Inc.
3881 N. Greenbrooke Dr. SE
Grand Rapids, MI 49512 USA
(616) 554-5020 • Fax: (616) 554-5021
www.weiss-na.com
24/7 Service Support Helpline: 1-800-361-6731

Join Us **LinkedIn**®

Global Partner for Environmental Test Chambers



Weiss Technik North America, Inc. Calibration Services are accredited by A2LA to ISO/IEC 17025



Weiss Technik North America, Inc. Quality System is registered to ISO9001:2015