

TVC - Space Simulator 700L

Vacuum chamber 700L
10-6 mbar
-50°C / +100°C

Industries

Space and electronics

Application

Perform thermal cycling tests under secondary vacuum conditions on electronic components for space applications

Description of the equipment

- A cylindrical vacuum chamber with thermal plates and shrouds independently regulated in temperature
- A frame in which the machinery and pumps are installed
- A control panel on the electrical cabinet
- A supervision and control system SPIRALE Vs

Technical Data

Performances are given for :

- An ambient temperature between +15°C and 25°C
- A dissipation : 200 W per thermal plate

Temperature

Range : -50°C to +100°C

Average cooling rate : 3°C/mn without load

Average heating rate : 3°C/mn without load

Temperature stability : ± 1°C

Homogeneity on the shrouds : ± 5°C

Homogeneity on thermal plate : ± 1,5°C

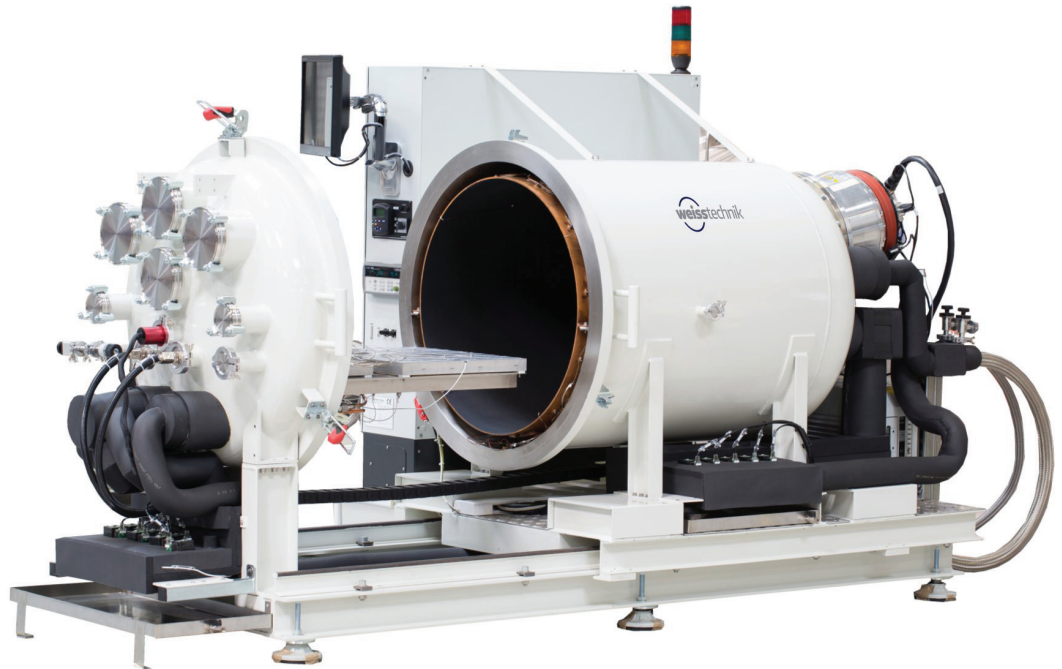
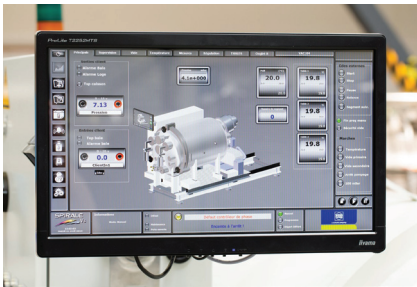
Vacuum

Range : from AP to 10-6 mbar

Variation speed : from AP to 2.10-5 mbar in 2h

Dimensions :

	Test space	Overall Dimensions
Volume		
Width	Ø 780mm (30.7")	2500mm (98.4")
Depth	1000mm (39.4")	3840mm (151.2")
Height		1800mm (70.9")



Weiss Technik North America, Inc.

3881 N. Greenbrooke Dr. SE
Grand Rapids, MI 49512 USA
(616) 554-5020 • Fax: (616) 554-5021
www.weiss-na.com
24/7 Service Support Helpline: 1-800-361-6731
Global Partner for Environmental Test Chambers