

TAH - Temperature Altitude Humidity Chamber 15m³ (530ft³)

Climatic chamber 15m³ (530 ft³)
Hot Cold Vacuum Humidity
-60°C / +150°C
10 mbar

Industries

Electronics, defense and aeronautics

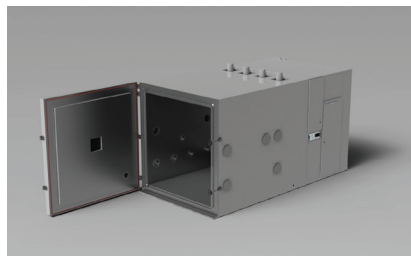
Application

Climatic and altitude tests on electronic equipment for aeronautic industry

Description of the equipment

Unit composed of :

- The test chamber with its conditioning unit at the back
- The machinery on the rear side with its electrical cabinet
- The command panel on the side
- SPIRALE Vs control and supervision software



Technical Data

Performances are given for :

- A load of 500 kg (aluminium, epoxy and composite materials)
- A dissipation of 1500 W (incl. temperature set point variation)

Temperature

From atmospheric pressure to 200 mbar (approx. altitude 38.5 kft)

Range : From -60°C to +150°C

Cooling rate :

5°C/mn average from +85°C to -40°C

3°C/mn average from +100°C to -60°C

Heating rate :

5°C/mn average from -40°C to +85°C

3°C/mn average from -60°C to +100°C

Humidity

At atmospheric pressure (site level):

Range of temperature : From +20°C to +60°C

Range of humidity : 20 to 95 % without dissipation

Stability of humidity : $\leq \pm 5$ % RH

Homogeneity : ± 5 % RH at 20 cm of the walls

Vacuum

Range : From AP to 10 mbar, regulated down to 50 mbar

Speed of variation : From AP to 100 mbar in 20 min, in a dry chamber

Regulating accuracy : ± 1 mbar

Dimensions :

	Useful Volume	External Dimensions
Width	2400mm (94.5")	3023mm (119.0")
Depth	2500mm (98.4")	5770mm (227.2")
Height	2500mm (98.4")	3190mm (125.6")

Weiss Technik North America, Inc.

3881 N. Greenbrooke Dr. SE
Grand Rapids, MI 49512 USA
(616) 554-5020 • Fax: (616) 554-5021

www.weiss-na.com

24/7 Service Support Helpline: 1-800-361-6731

Global Partner for Environmental Test Chambers