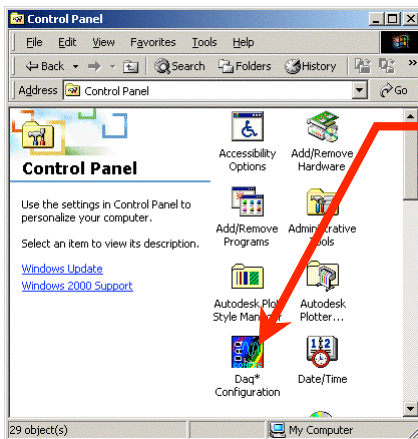


Getting Started:

Software Default installation is simulation mode. While in simulation mode it is possible to define and run test without a key or any hardware.

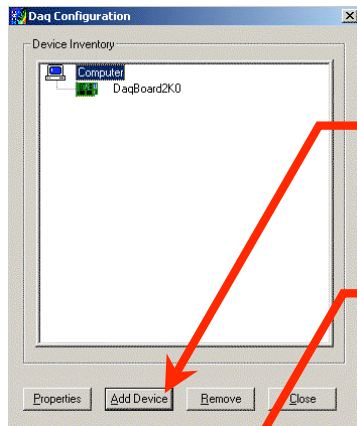
Setting up IOtech Hardware.

1) Open Daq* from Control Panel

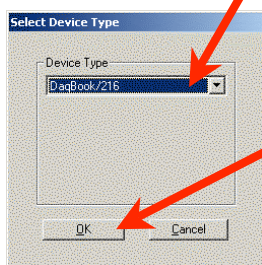


Select Daq* Configuration

2) Add Device



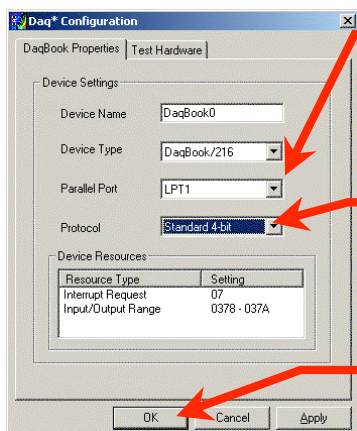
If Device is NOT listed select Add Device



Select Device Type
For DaqBook Select DaqBook/216

If using the PCI Card, select DaqBoard2k0,
and skip down to step#3

Press OK

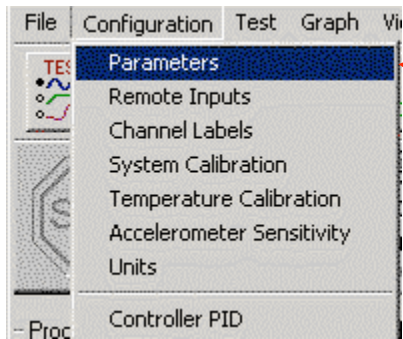


Set Parallel Port to match port to which IOtech Box is connected.
This *cannot* be the same port as the KEY.
Systems using DaqBook require 2 parallel ports

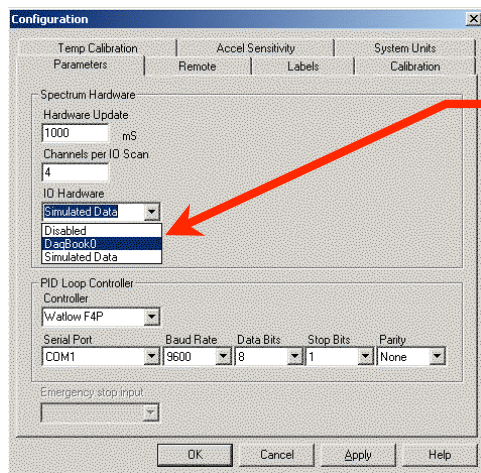
Set Protocol:
Preferred protocol is SMC666EPP (Requires EPP Parallel Port)
Compatible protocol is Standard 4-Bit

Press OK

3) Start StarVIEW software



a) Select Parameters Menu



b) Select Device setup with Daq*