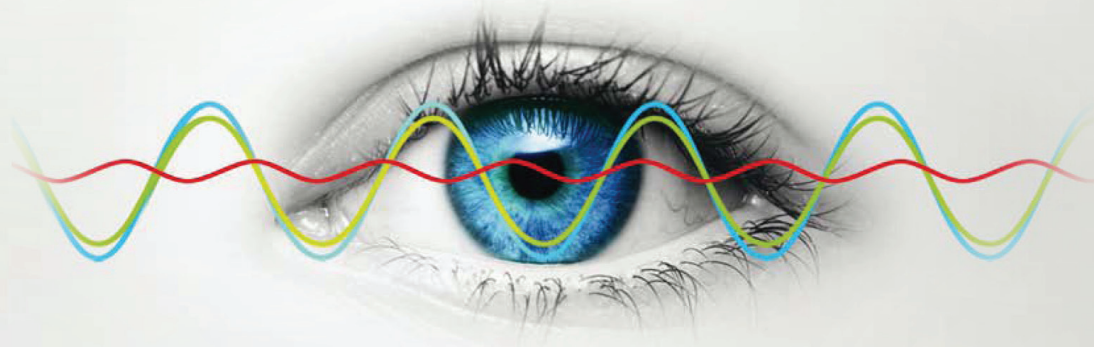


Visual Documentation of Test Sequences



Pictures
speak louder than
1000 readings

Test equipment with visual perception

Never miss a moment

Adding and correlating to the conventional recording of measurement data of temperature, humidity and time, digital camera images are recorded by software over a defined period of time and logged in the same archive file as the measurement data. The combined evaluation of the measurement data and images over time will bring about new and valuable information, in particular with respect to the timing on an event.



SIMPATI® time labs documents:

<p>Electronics</p> <ul style="list-style-type: none"> • Functional impairment • LED/LCD display reactions 	<p>Mechanics/movement</p> <ul style="list-style-type: none"> • Fan standstill • Valve control • Valve timing 	<p>Dewing</p> <ul style="list-style-type: none"> • Surface precipitation • Moisture accumulation
<p>Corrosion</p> <ul style="list-style-type: none"> • Progress of the process 	<p>Liquid level</p> <ul style="list-style-type: none"> • Changes to filling level 	<p>Material behaviour</p> <ul style="list-style-type: none"> • Deformation



Camera Options

Weiss Technik offers several camera options to capture all the measured data images you need. Contact us for complete information.

Package I - Simpati TimeLABS software.

Package II - External camera

Other camera devices can also be used including, smart phone, lap-top camera, endoscope, microscope, webcam thermal imaging cameras, and digital and analogue cameras.

The perfect documentation via video surveillance - each process is traceable to the second

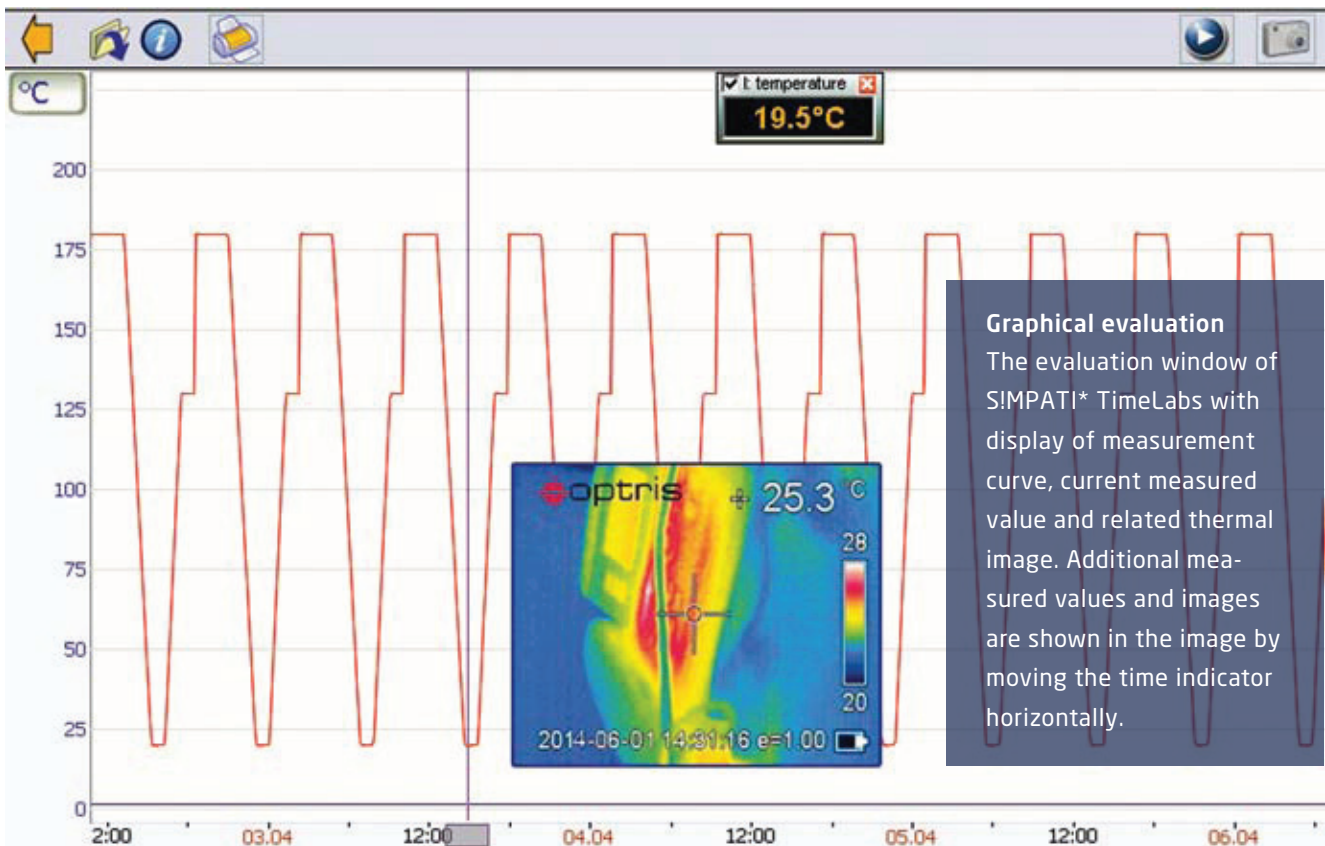
It`s as easy as ever. Once the test sequence is completed, all of the data is available in slow motion and in fast motion in a clear and intuitive display.

Innovative operating concept

When evaluating images and measured data, the user can look through a series of captured images in "fast motion" on a graphic timeline in just a few seconds. The user can also view frame by frame with greater precision by using an automatic slow motion function. This saves time compared to looking in a traditional video stream. Viewing of measured data and images simultaneously and second-by-second is a huge advantage and only possible with SIMPATI* TimeLabs.



- + View the test subject during the test phase.
- + New and unique in application and flexibility.
- + Data-protected documentation of test sequences adds security to your production.
- + Easy installation and operation.
- + Simultaneous documentation of images and measured data.
- + Up to 1,500 images can be stored in each archive and file.
- + Compatible with up to 6 HD-quality cameras.
- + Thermal imaging cameras can be operated jointly.
- + Upgradeable even in existing systems.
- + Internal and external installation of camera possible at any time.
- + Patent pending!



Weiss Technik North America

...Global Partner for Environmental Test Chambers.

The product range includes systems for climatic and temperature tests, weathering, thermal shock, corrosion and long-term tests of economic series-produced instruments to customised process-integrated systems.

The planning, manufacture and installation of all test chambers for research, development, quality assurance and production is our forte.

An effective after-sales service offers the best possible support and a high level of reliability of service for your systems.

Our decades of experience, intensive exchange with developers, customers and committees, and our quality-oriented innovation management are the guarantors for the continual development of our products.

Always the best solution for you.

Weiss Technik North America, Inc.

3881 N. Greenbrooke Dr. SE
Grand Rapids, MI 49512 USA

(616) 554-5020

Fax: (616) 554-5021

www.weiss-na.com

Service Support Helpline: 1-800-361-6731

Global Partner for Environmental Test Chambers



Weiss Technik North America, Inc. Calibration Services are accredited by A2LA to ISO/IEC 17025



Weiss Technik North America, Inc. Quality System is registered to ISO9001:2015