



Xcel®

Fast Change Rate Temperature & Humidity Test Chambers

The series that adapts to your testing Requirements



Flexibility • Efficiency • Connectivity

Stand the test of time.

www.weiss-na.com

Xcel Performance & Design Features

Fast Change Rate Chambers in a Compact design

Xcel Series

The Chamber series that adapts to your testing Requirements

the Xcel series temperature and temperature humidity chambers from Weiss technik provide fast change rates and accurate testing in a compact design for your specific testing requirements. through intelligent engineering, design flexibility and a broad temperature range, Xcel will give you lasting durability. Xcel includes standard features and optional accessories that allow for precise, reliable product testing.



Features:

- Reliable fast change rate chamber
 - Robust Heating & Cooling systems allow for optimum performance
 - Designed to hold higher live loads
 - Small footprint - allows access through industrial size personnel door
 - Stress screening capabilities
 - 800 CFM air flow
 - User Friendly heavy duty adjustable casters
- Many additional options available

Xcel offers many standard & optional features that provide the best performance for your testing application.



Touchscreen Controller



Adjustable heavy duty Leveling Casters



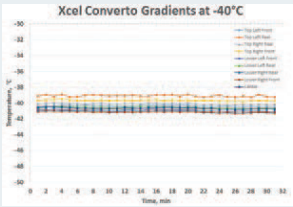
Adjustable double deflection grill for Optimum airflow



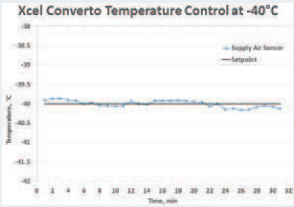
Keyed door Lock



Double gasket seal



Precise gradients



Control accuracy

Up to 40% Energy Savings

Impressive Technology. Reliable Results.

The performance data at a glance

Xcel		EX20	EX40	EX60		
Test Space Volume		Cubic Feet Liters	21 / 595	37 / 1038	64 / 1812	
Test Space Dimensions		Width	36" (914 mm)	40" (1016 mm)	48" (1219 mm)	
		Depth	28" (711 mm)	36" (914 mm)	48" (1219 mm)	
		Height	36" (914 mm)	44" (1118 mm)	48" (1219 mm)	
Assembled Dimensions ¹		Width	44" (1118 mm)	48" (1219 mm)	53" (1346 mm)	
		Depth	80" (2032 mm)	85" (2159 mm)	97" (2464mm)	
		Height	86" (2210 mm)	94" (2388 mm)	92" (2337mm)	
Temperature Change Rate ²		System D	Heating	16°C/min	14°C/min	12°C/min
			Cooling	14°C/min	12°C/min	10°C/min
		System G	Heating	22°C/min	20°C/min	18°C/min
			Cooling	21°C/min	19°C/min	17°C/min
Temperature Range ³		Minimum	-70°C to +180°C			
		Maximum	-180°C (+356°F)			
Humidity Range ⁴			5% RH to 98% RH			
Dry Bulb Range			+5°C to +95°C			
Dew Point Range			+4.5°C to +90°C			
Input Power ⁵			480V, 3ph, 60Hz			
Refrigeration			Water Cooled			

¹ Assembled dimensions are the overall dimensions of the Test Chamber + Machine Pack. Dimensions may not include ancillary equipment.

² Heating and cooling rates between +85°C and -40°C in an empty chamber, measured at the supply air. Temperature ramp rates are average not linear rates of change.

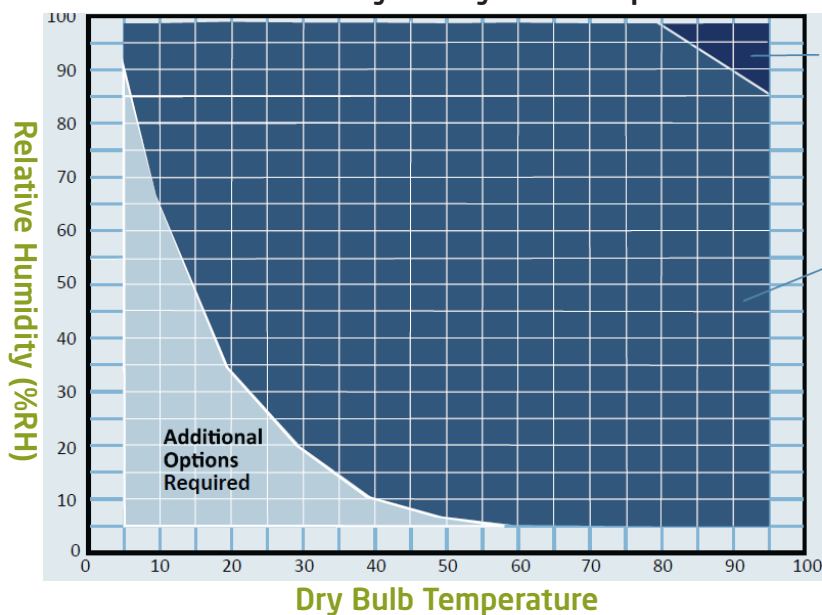
³ Performance is based on laboratory conditions at +24°C with cooling water inlet temperature and flow according to requirements; 60 Hz electrical service, performance at 50 Hz may vary.

⁴ Humidity control requires humidity control option.

⁵ Other Input Power options available.

All dimensions are approximate. Extension module may be purchased for greater test space volume.

Relative Humidity vs. Dry Bulb Temperature



Extended Humidity Range
Optional equipment may be needed. Please consult your account manager.

Xcel Humidity Range



Flexibility • Efficiency • Connectivity

Top Performance with Accurate Results

The Future of Test Chamber Refrigeration Technology - Today

LEEF Technology provides unmatched performance in your testing requirements. LEEF's high efficiency innovative technology offers significant benefits and reduces carbon footprint at the same time.

Environmental test chambers are often used for more than 15 years. Weiss Technik provides you the technology of the future - making your test chambers and lab future-proof!

Let Weiss Technik help improve your testing and your environmental stewardship.

Customer Benefits

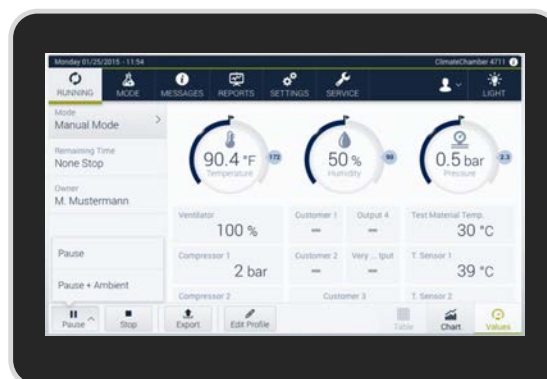
- Reliability of test results: Up to 70% improved accuracy of temperature and humidity settings
- Productivity: Reduce test time thanks to up to 60% faster temperature pull down rates
- Cost Savings: Up to 40% energy savings
- Sustainability: LEEF actively supports policies to reduce the Carbon Footprint
- LOW GWP (Global Warming Potential): R-449A Refrigerant

Webseason Software

Streamlined operations, elevated performance

WEBSeason® Chamber Control

The WEBSeason® control system is the latest technology in digital chamber control and programming. With the simple, easy-to-use touchscreen and menu-guided user interface, no programming knowledge is necessary. WEBSeason® offers many features including USB and Ethernet interfaces, remote control and remote monitoring, networking with other test systems, and a 32-bit control and monitoring system to ensure accurate control of temperature and humidity.



Service Support

We're here to help

Our products are backed by our global factory trained service department. With over 400 service technicians located throughout the globe.

We offer our customers a wide variety of services including the following:

- After hours support helpline
- Preventive maintenance program
- Chamber start-up
- Installations
- Emergency service
- Technical support
- Spare parts & materials
- Calibrations per ISO 17025 (instrument and chamber)
- Chamber diagnostics, troubleshooting and evaluations
- Equipment upgrades and retrofits
- Refrigerant removal and disposal
- Chamber liner leak test
- Chamber modifications
- Equipment relocations
- Training on proper equipment use and programming
- Rental programs /used equipment
- Service on all makes and models

Quality - Count on Weiss Technik

Weiss Technik helps make the task of compliance with the QS9000 3rd Edition Calibration Mandate much simpler. There is no need for you to take the time to actively seek an accredited laboratory. Weiss Technik, certified ISO9001 in 1997, can provide the latest required ISO/IEC 17025 (A2LA accredited) calibration services at your facility. These services meet 17025 requirements and ensure that your company is in compliance with the most recent changes in the QS9000 3rd Edition mandate.



Weiss Technik North America, Inc. Calibration Services are accredited by A2LA to ISO/IEC 17025



Weiss Technik North America, Inc. Quality System is registered to ISO9001:2015

Weiss Technik North America, Inc.

3881 N. Greenbrooke Dr. SE
Grand Rapids, MI 49512 USA
(616) 554-5020 • (800) 368-4768 • Fax: (616) 554-5021
www.weiss-na.com
After Hours Service Support Helpline: 1-800-361-6731

Join us on **LinkedIn**®

Stand the test of time.